

Rough Bank Reserve, near Stroud, Gloucestershire



Rough Bank - was acquired by Butterfly Conservation in March 2012. It is designated an SSSI and is Open Access land under The Countryside and Rights of Way Act (CROW). It is also part of the Cotswolds Commons and Beechwoods NNR.

The site is mainly grazed by cattle which is vital for maintaining the grassland in good condition for the butterflies and flowers. Much work has been done since 2012, including creating a visitor car park.



The 18 ha site (entrance field SO913 087) is just south west of The Camp – a small hamlet on the minor road called Calf Way which connects the B4070 from Birdlip to Bisley near Stroud. Though Calf Way is a small country road it can be busy and the traffic is fast so visitors should be aware of the need for extra caution entering and exiting the car park.



A bridleway and a footpath cross the eastern part of the reserve (Little Myers) and provide two means of access. There is an entrance gate onto the reserve and into the car park from Calf Lane (red circle on OS map below).

The two fields (Little Myers and Great Myers) both have marshy areas in them and can be very wet at certain times of the year. There is always a pond in the middle of Great Myers.



Following down from the bridleway and slightly to the right you come to a couple of gates and an 'access' strip. Here you will see a new Cotswold stone wall built by the Cotswolds Voluntary Wardens.



At the end of the access strip a gateway on the left brings you onto Rough Bank itself. There are many ancient trees in the wooded parts of the reserve and along hedge banks.

There are many flowers, particularly on Rough Bank. About 12 species of orchid have been seen since the site was purchased – below are Common Spotted Orchid, Lesser Butterfly Orchid and Early Purple Orchid.



33 species of butterfly have been recorded on the reserve transect since 2012.

There are six species of the Lycaenidae family: Common Blue, Brown Argus, Small Blue, Chalk Hill Blue, Adonis Blue and Holly Blue present on the site. Below are Small Blue, Small Heath, Green Hairstreak and Adonis Blue.



Around 600 species of moth have been recorded on the site, with about 40 rare or scarce species. This, together with all the other species, demonstrates the richness and diversity of Rough Bank. Below are pictures by Guy Meredith of *Nemophora metallica*, Blomer's Rivulet, Small Elephant Hawk-moth, Small Plume, Orange-tailed Clearwing and Maple Prominent.

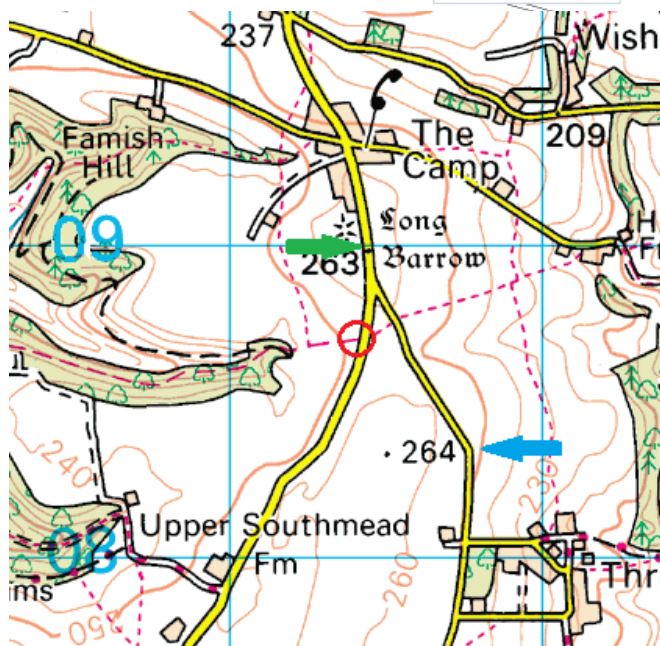


Please follow the Countryside Code and leave gates as you find them. Be aware that some fencing might be electrified. Dogs must be kept under control at all times.

For further information please contact: Butterfly Conservation Head Office: 01929 400209

Or: BC Gloucester Branch website <http://www.gloucestershire-butterflies.org.uk/index.html>

Sept 2015.



91

 Entrance gate SO913087

© Crown copyright and database rights 2010 Ordnance Survey EULA

Butterfly Conservation, Manor Yard, East Lulworth, Wareham Dorset BH20 5QP Tel Reception: 01929 400209: Fax 01929 400210
Company limited by guarantee, registered in England (2206468). Charity registered in England & Wales (254937) and in Scotland (SCO39268)